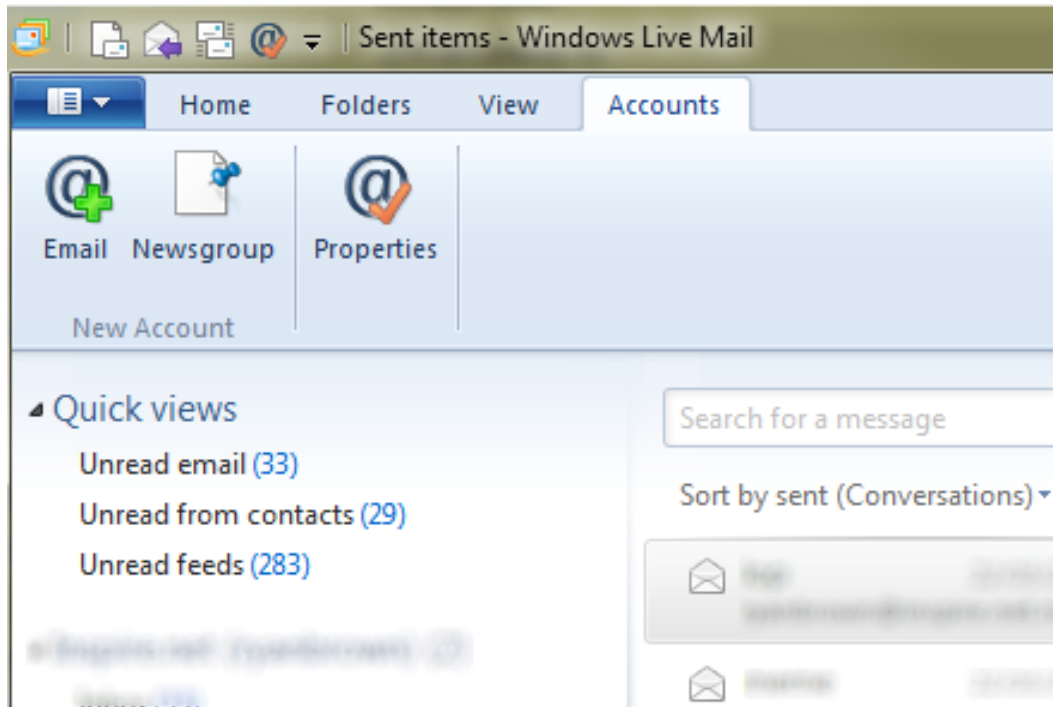


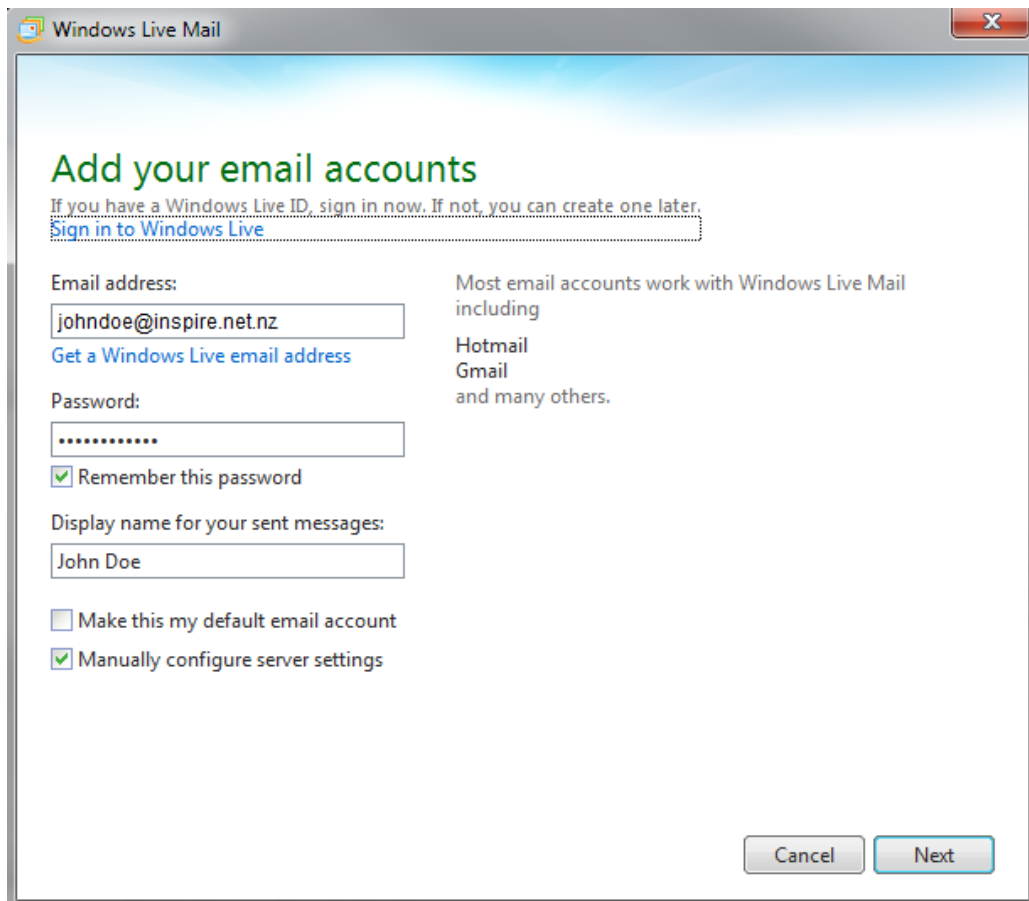
# Windows Live mail setup guide



1. Select the **'Accounts'** Tab, then select **'Email'**



2. Enter the required details, select **'Manually Configure server settings'** and click **'Next'**



# Windows Live mail setup guide



3. Choose 'POP' from the 'Server type' menu, fill in the required details and click 'Next'

The screenshot shows the 'Configure server settings' dialog box in Windows Live Mail. The title bar reads 'Windows Live Mail'. The main heading is 'Configure server settings' with a sub-note: 'If you don't know your email server settings, contact your ISP or network administrator.' The dialog is divided into two sections: 'Incoming server information' and 'Outgoing server information'. In the 'Incoming' section, 'Server type' is set to 'POP', 'Server address' is 'pop3.inspire.net.nz', 'Port' is '110', and 'Authenticate using' is 'Clear text'. In the 'Outgoing' section, 'Server address' is 'smtp.inspire.net.nz', 'Port' is '25', and both 'Requires a secure connection (SSL)' and 'Requires authentication' are unchecked. A 'Logon user name' field contains 'johndoe'. At the bottom right, there are 'Cancel', 'Back', and 'Next' buttons.

4. Email Account Wizard completed, click 'Finish'

The screenshot shows the 'Your email account was added' dialog box in Windows Live Mail. The title bar reads 'Windows Live Mail'. The main heading is 'Your email account was added' with a green checkmark icon. Below the heading, it says '@inspire.net.nz was added'. There is a link that says 'Add another email account'. At the bottom right, there is a 'Finish' button.